

INDUSTRIAL SPACE FOR LEASE

80 Ramona St, Rochester, NY 14613



PROPERTY DETAILS

Building SF:	16,931
Drive-Ins:	3 Doors
Parcel:	2.5 AC
Zoning:	I
Parking:	45 Spots
Year Built:	1960

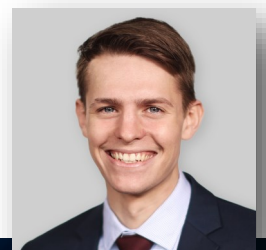
PROPERTY SUMMARY

Discover a prime commercial opportunity in the heart of Rochester, NY! This expansive property boasts a generous 16,931 square foot building, featuring three convenient drive-in doors, all nestled on a sprawling 2.5 acre lot. Built in 1960, this property is zoned I, making it ideal for a variety of industrial and commercial uses. With an impressive 45 parking spots, accommodating both staff and clientele is a breeze. Located for maximum convenience, the property offers easy access to I-490 and I-390, ensuring seamless transportation connections for your business.

Nick Halligan

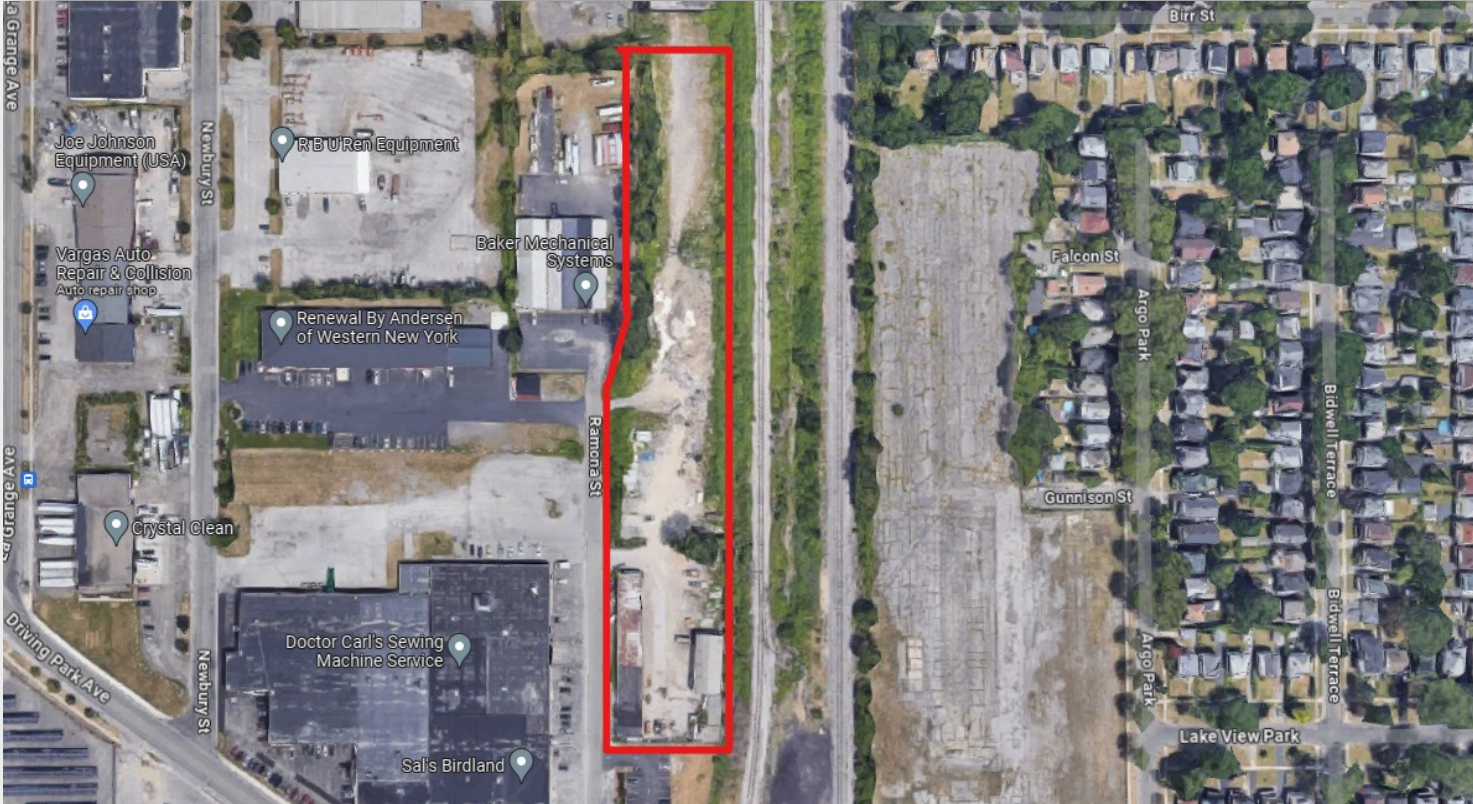
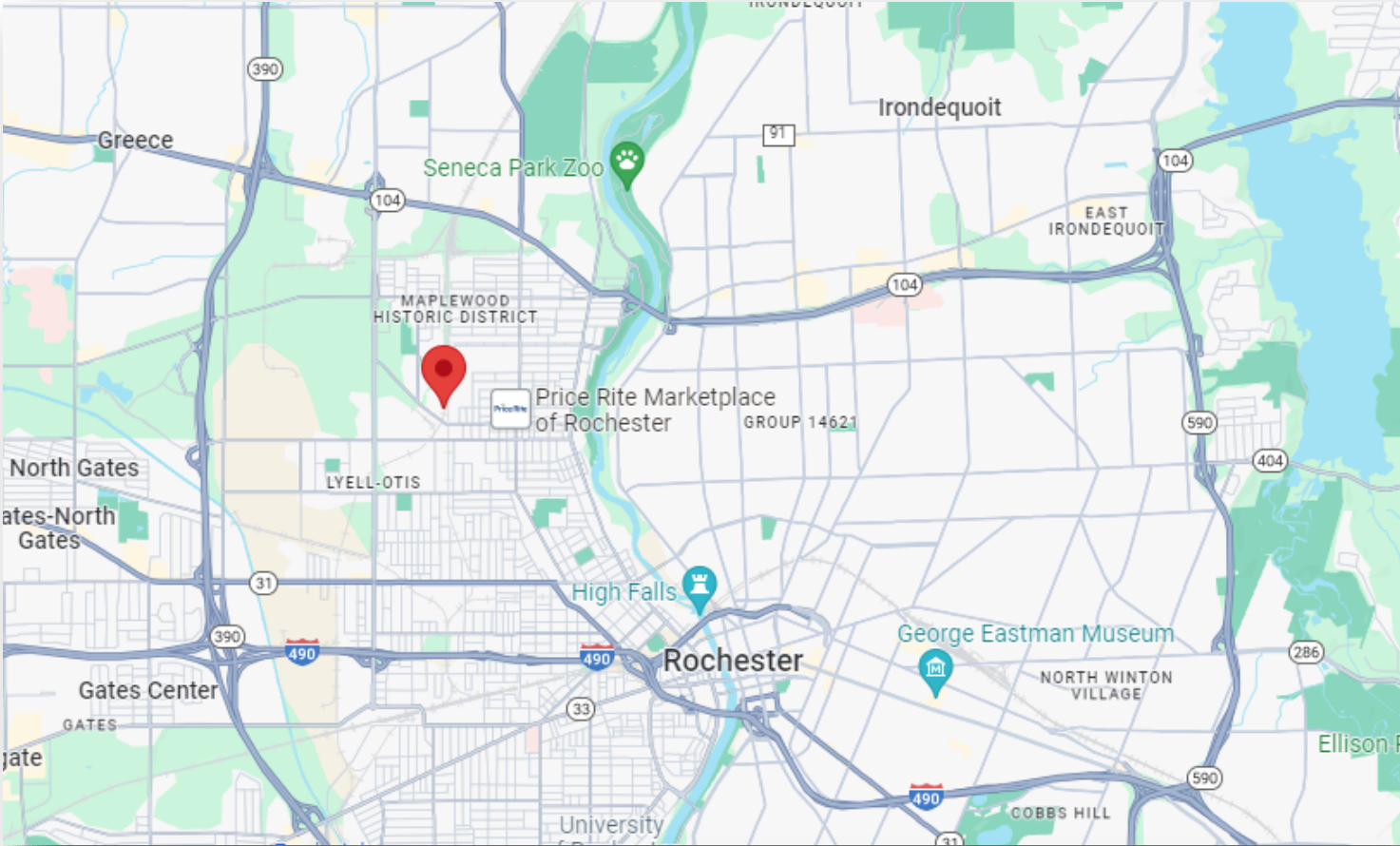
1.315.630.8920

Nicholas@IronhornEnterprises.com



INDUSTRIAL SPACE FOR LEASE

80 Ramona St, Rochester, NY 14613



INDUSTRIAL SPACE FOR LEASE

80 Ramona St, Rochester, NY 14613

