

INDUSTRIAL SPACE FOR LEASE

498 Industrial Dr, Bristol, TN 37620-5400



PROPERTY DETAILS

Building SF:	24900
Lot Size:	5.73
Graded Levels:	2
Dock Doors:	1
Ceiling Height:	13-17'
Zoning:	M-2
Year Built:	1998

PROPERTY SUMMARY

Introducing this top-tier industrial property, with 24,900 SF of space and a 13-17 foot clear height. With its convenient two drive in doors and one dock door, private parking, generous 9,000 SF of nicely finished office space and being fully climate controlled, 498 Industrial Drive will bring ease to your business. Sitting on over 5 acres and its accessibility to US-421, this space ensures accessibility. Don't miss the opportunity to explore this property firsthand – schedule your tour today!



Visit
Our
Website

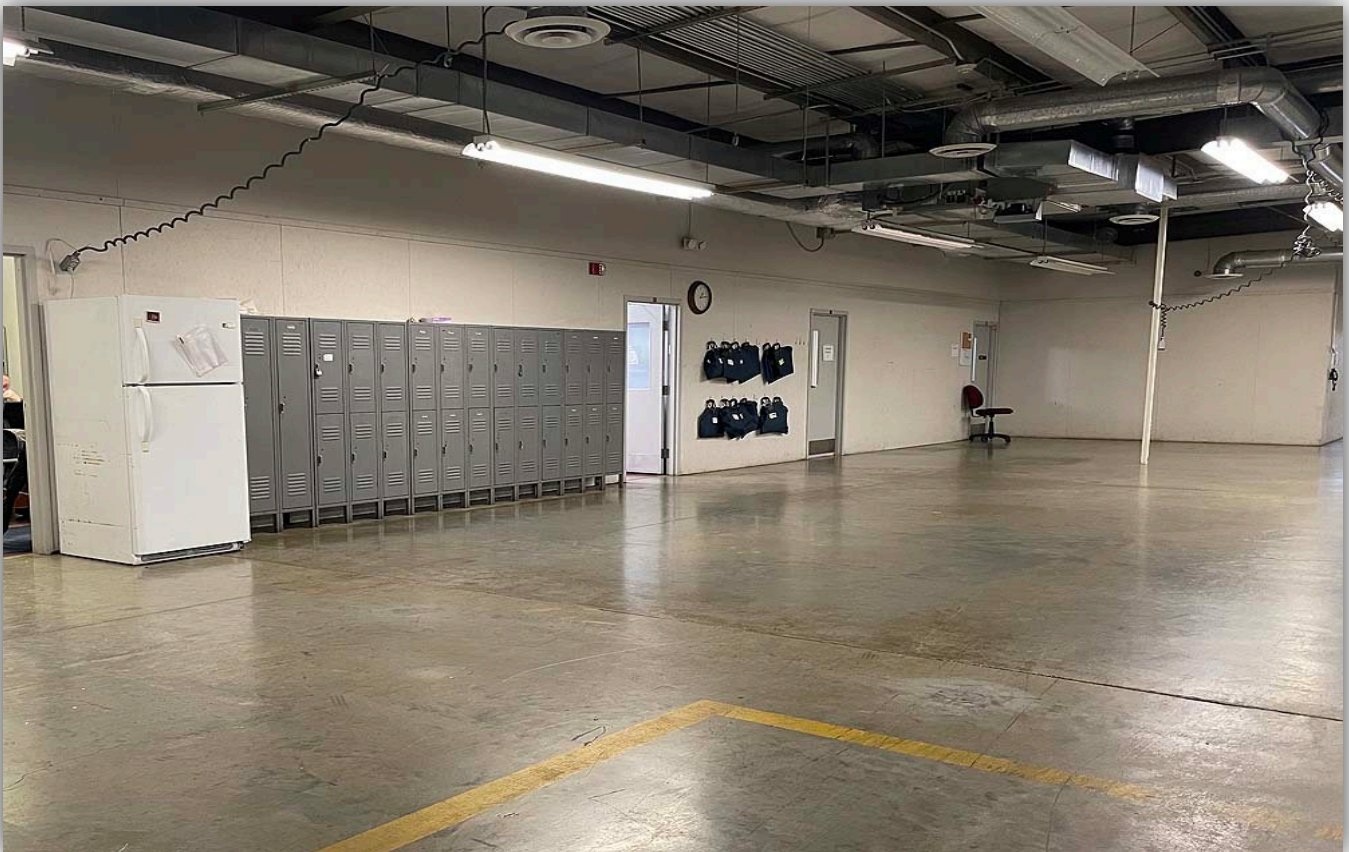
Chassidy Sawkins
(315) 256-2262

chassidy@ironhornenterprises.com



INDUSTRIAL SPACE FOR LEASE

498 Industrial Dr, Bristol, TN 37620-5400



INDUSTRIAL SPACE FOR LEASE

498 Industrial Dr, Bristol, TN 37620-5400

