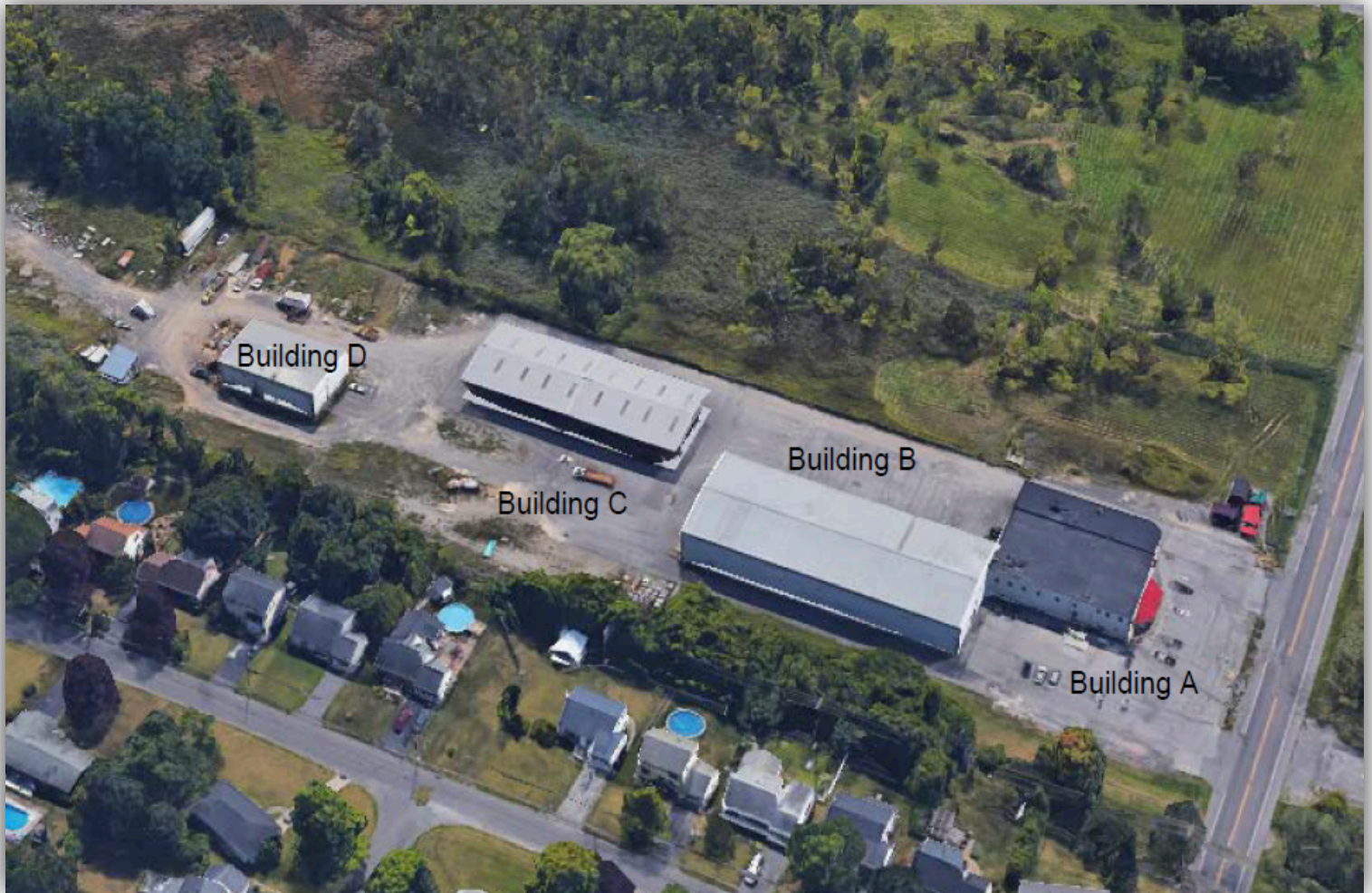


# INDUSTRIAL SPACE FOR LEASE

5912 N Burdick St, East Syracuse, NY 13057-9560



## PROPERTY DETAILS

Building SF:	34,250
Lot Size:	4.86
Zoning:	CB
Year Built:	1963
Buildings:	4

## PROPERTY SUMMARY

34,250 SF industrial space divided amongst 4 buildings sitting on 4.86 acres in East Syracuse, NY. Building A: 13,500 SF Office Space ; Building B: 17,000 SF 25' Clear height, 3 16x16 Doors ; Building C: Outdoor structure 14,000 SF ; Building D: 4,500 SF



Visit  
Our  
Website

**Jonathan Lasala**  
(315) 882-7531

[jlasala@ironhornenterprises.com](mailto:jlasala@ironhornenterprises.com)



# INDUSTRIAL SPACE FOR LEASE

5912 N Burdick St, East Syracuse, NY 13057-9560



# INDUSTRIAL SPACE FOR LEASE

5912 N Burdick St, East Syracuse, NY 13057-9560



# INDUSTRIAL SPACE FOR LEASE

5912 N Burdick St, East Syracuse, NY 13057-9560

