

# INDUSTRIAL SPACE FOR LEASE

400 Mound City Rd, West Memphis, AR



## PROPERTY DETAILS

Building SF:	.....	36,909
Office SF:	.....	9,800
Warehouse SF:	.....	27,109
Drive Through bays:	.....	16
Bay Depth:	.....	64-84 feet
Parcel:	.....	9.19 AC
Door Height:	.....	14'
Year Built	.....	1988

## PROPERTY SUMMARY

Discover a prime opportunity for your fleet maintenance operations with this expansive facility, perfectly situated on 9 acres of well-located land. This impressive building features 16 drive-through bays, designed specifically for truck repair, ensuring efficiency and convenience for all maintenance activities.

The spacious bays are equipped to accommodate a variety of vehicles, from light-duty trucks to heavy-duty commercial rigs. Each bay is designed for optimal workflow, allowing mechanics to easily access vehicles from both sides, minimizing downtime and enhancing productivity. Contact us today for more information or to schedule a tour!

**Rob Zuccaro**

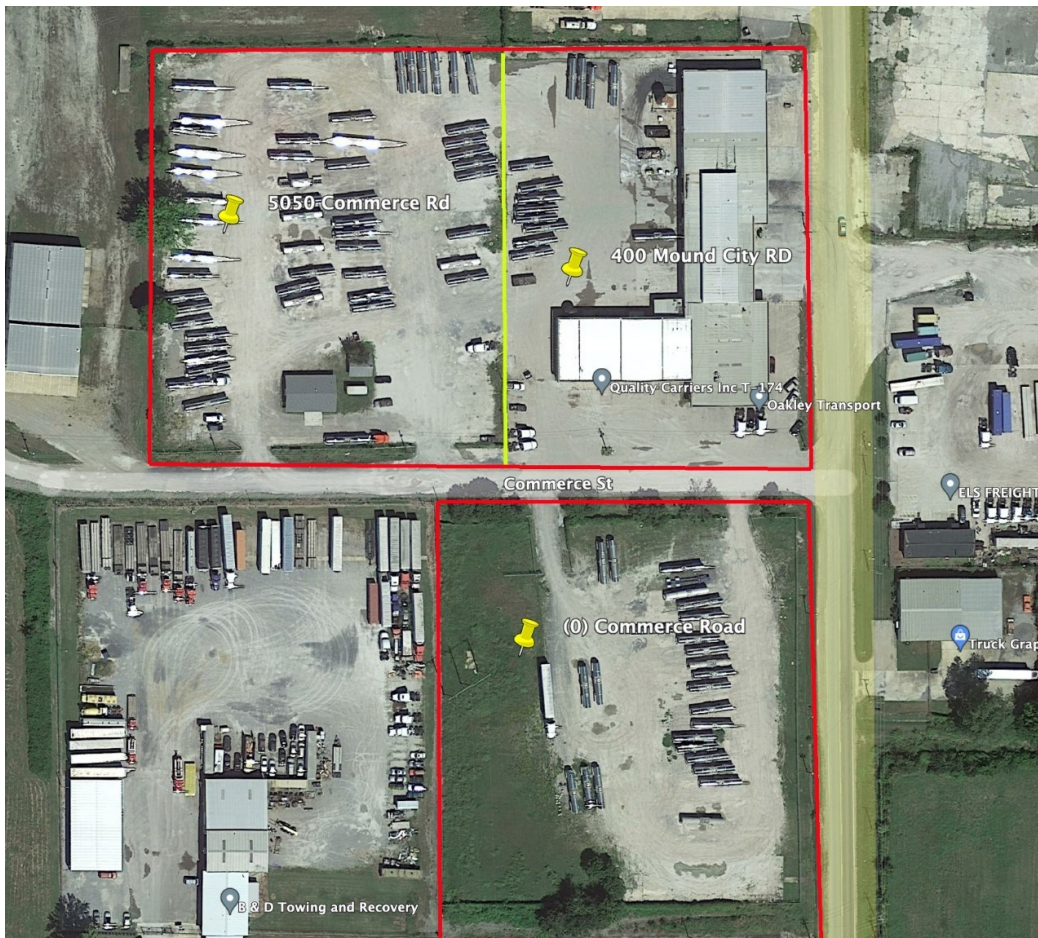
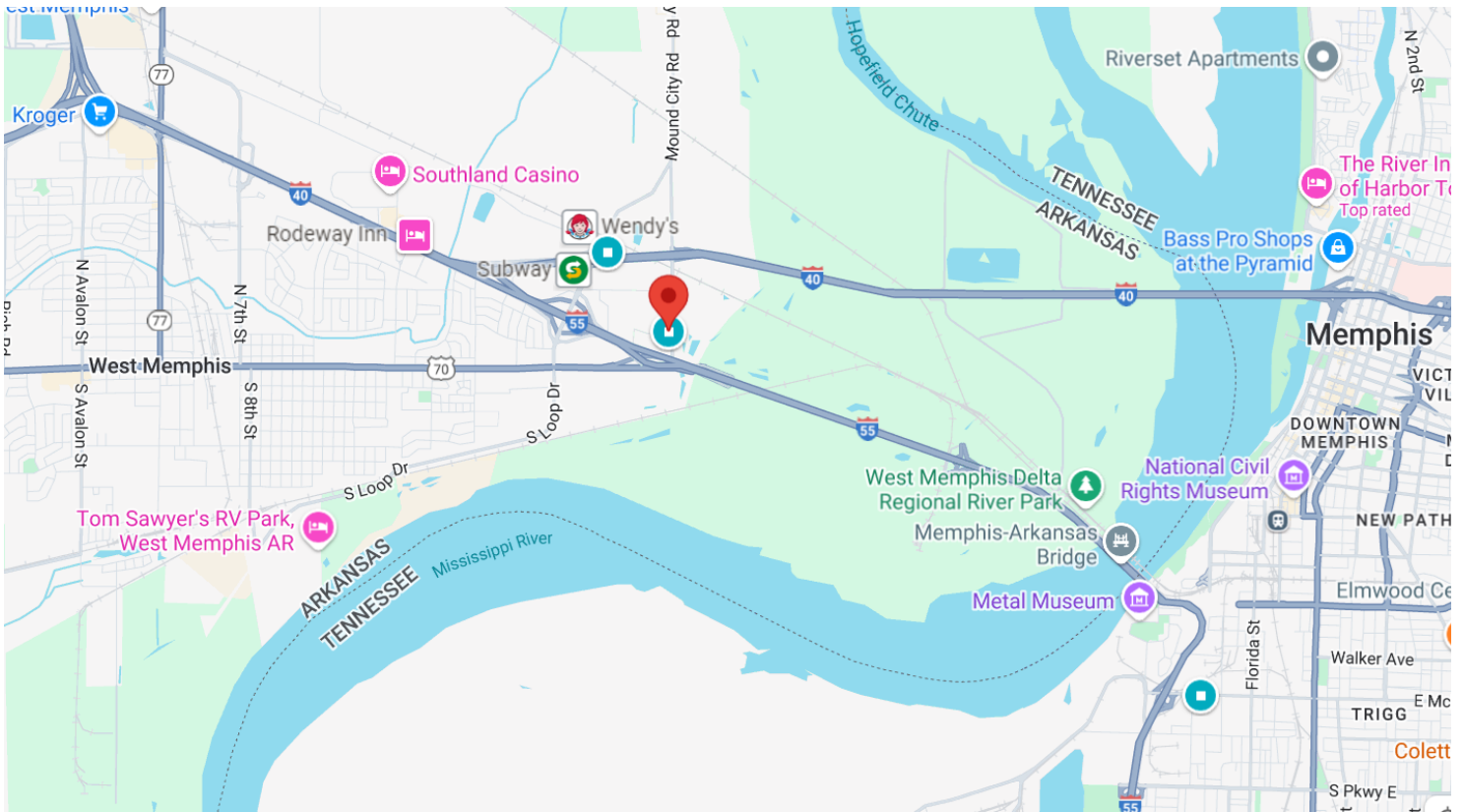
(315) 243-4532

[Rob@IronhornEnterprises.com](mailto:Rob@IronhornEnterprises.com)



# INDUSTRIAL SPACE FOR LEASE

## 400 Mound City Rd, West Memphis, AR



# INDUSTRIAL SPACE FOR LEASE

400 Mound City Rd, West Memphis, AR

